

PROJECT:

TYPE:

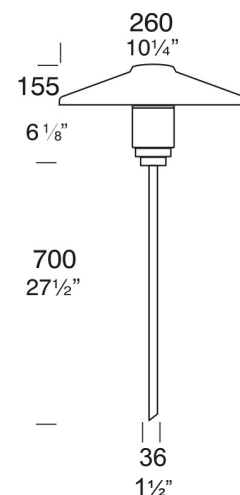
SOURCE:

NOTES:

### PURELED SPECIFICATIONS

CE cUL US LISTED

<b>LED Chip</b>	Cree XHP-50-2 Plug and Play field replaceable LED board
<b>Luminaire Output</b>	510 Lumens @ 1050mA (6 watts), 340 Lumens @ 700mA (4 watts), 160 Lumens @ 350mA (2 watts), delivered from luminaire with unobstructed beam.
<b>Lumens Per Watt</b>	85 Lumens minimum @ 6 watts, delivered from luminaire with unobstructed beam
<b>CRI (3000K)</b>	90+
<b>Colour Temperatures</b>	2700K, 3000K, 4000K
<b>Beam Angles</b>	360 degrees
<b>Ingress Protection</b>	IP56/IP66
<b>Warranty</b>	Electronics = 5 years Body Cop/ SS = 10 years Body Aluminium = 5 years
<b>Standards</b>	AS/NZS 61046 cUL 1838, 2108 CSA C22.2 No.250.7, No.250.0-08 CE



### PRODUCT CONFIGURATION

Please fill in appropriate codes into boxes provided

Cat. No. TL/L

Luminaire	Power	Material/ Finish	Beam	Colour	Accessories
TL/L					

<b>S</b> SERIES, REMOTE DRIVER <b>D3</b> 12VAC, 2W INTEGRAL <b>D7</b> 12VAC, 4W INTEGRAL <b>D10</b> 12VAC, 6W INTEGRAL <b>R</b> RETRO, 110/240V DRIVER	<b>ALUMINIUM</b> <b>EBK</b> BLACK <b>EBZ</b> BRONZE <b>EOGR</b> OLIVE GREEN <b>EWB</b> WHITE <b>EWB</b> WHITE BIRCH <b>EDG</b> DARK GREY <b>ESTAR</b> SILVER STAR <b>ECT</b> CORTEN <b>COP</b> SOLID COPPER <b>SS</b> STAINLESS STEEL	<b>360</b> 360°        	<b>2</b> 2700K <b>3</b> 3000K <b>4</b> 4000K	<b>SSP/G</b> SUPER SPIKE <b>FM</b> FLANGE MOUNT <b>CJK</b> CABLE JOINT KIT <b>BOLOP</b> OPAQUE LENS
--------------------------------------------------------------------------------------------------------------------------------------------------------------------	---------------------------------------------------------------------------------------------------------------------------------------------------------------------------------------------------------------------------------------------------------------------	-------------------------------------------------	----------------------------------------------------	--------------------------------------------------------------------------------------------------------------

#### SERIES, REMOTE DRIVER REQUIRED:

Constant current driver  
Individual fixtures require 6vdc @ 1050mA maximum

#### 12VAC INTEGRAL DRIVER:

Hunza integrated plug and play driver (included)  
Input: 9-15VAC, 7watt total  
Output: 6vdc @ D3=350mA, D7=700mA, D10=1050mA (1050mA limited to ≤ 40°C (104°F) ambient temperature in stainless steel)

#### 110/240VAC RETRO DRIVER:

Input: 120/240vac, 5 watt total (included)  
Output: 6vdc, 700mA (non dimming)

#### OTHER LAMP OPTIONS:

TL/H - MR16 Halogen 12V Lamp

TL/SL - MR16 LED Retrofit 12V Lamp (lamps vary by market - please refer to supplier for details)

TL/GUH - GU10 120/240V Halogen Lamp (body length increases for all GU10 lamps)

TL/GUSL - GU10 LED Retrofit 120/240V Lamp (lamps vary by market - please refer to supplier for details)

[Click here for halogen specification sheet](#)

[Click here for 240v Remote Power Supply Guidance Charts](#)

[Click here for USA Remote Power Supply Guidance Charts](#)

# LUMINAIRE CONSTRUCTION

**CNC machined from one of the following metals:**

**Aluminium:**

Body: Solid high corrosion resistant 63.5mm (2½") x 10mm (3/8") aluminium.  
End cap: solid aluminium 63.5mm (2½") rod, with chromate substrate and high UV resistant polyester powder coat.  
Pole: aluminium 38.1mm (1½") tube.  
Colours:  
Black, Bronze, Silver Star, White, White Birch, Olive Green, Dark Grey, Corten.

**Copper:**

Body: 63.5mm (2½") x 10mm (3/8").  
End cap: solid copper 63.5mm (2½") rod.  
Pole: solid copper 38.1mm (1½") tube.

**316 Stainless Steel:**

Body: 63.5mm (2½") x 10mm (3/8").  
End cap: solid 316 stainless steel 63.5 (2½") rod.  
Pole: 316 stainless steel 38.1mm (1½") tube.

**Anti-glare Hood:**

260mm (10¼") x 1.2mm (1/16") handspun aluminium, copper or stainless steel. No upward light or glare projected.

**Gaskets:**

Silicone, iron impregnated 220°C (428°F).

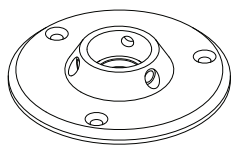
**Mounting:**

The pole 700mm (27½") is directly mounted into the earth. For extra stability in sand or loose ground use Hunza Super Spike.  
Flange Mount option is available for hard surfaces.

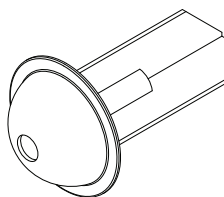
**Luminaire Weight:**

Low voltage  
Alum: 0.915kg (2lb)  
Cop: 1.590kg (5lb 11oz)  
SS: 1.450kg (3lb 13z)  
Retro™  
Alum: 2.000kg (4lb 6oz)  
Cop: 3.000kg (6lb 9oz)  
SS: 2.900kg (6lb 6oz)

## ACCESSORIES



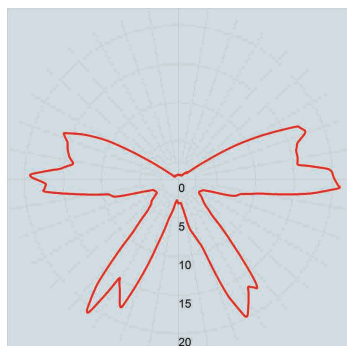
Flange Mount



Super Spike

## BEAM ANGLES

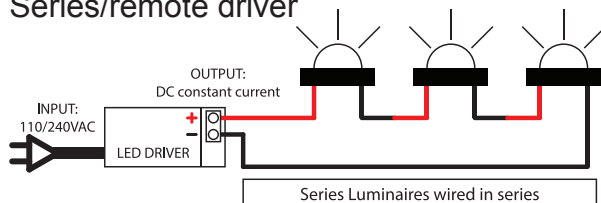
IES files available for download: [hunzalighting.com/downloads](http://hunzalighting.com/downloads)



Polycarbonate lens

## WIRING GUIDE

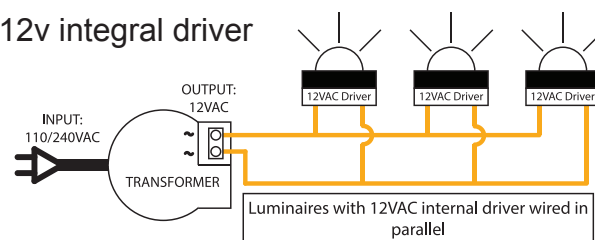
### Series/remote driver



Diagrams are a guide only, wire colours and polarity may change depending on fixture and country

Available for download: [hunzalighting.com/downloads](http://hunzalighting.com/downloads)

### 12v integral driver



Specifications may change without notification

Aug 2017